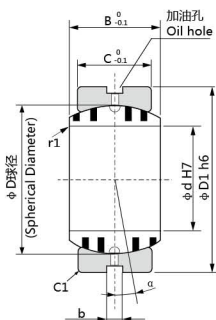


JDBS 自润滑板  
JDBS Oilless Wear Plate



Material	650 # + Graphite
材质	高力黄铜 + 石墨

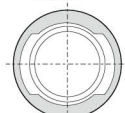
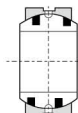
Spherical bushing assembly

关节轴承的装配

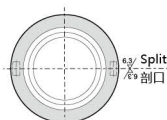
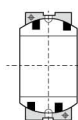
JDBS 015-090

Fixing direction

安装方向



JDBS > 100



单位unit:mm

型号规格 Standard No.	d	H7	D1	h6	B	C	D	b	调整角度 Alignment Angle $\alpha^\circ$	径向承载 Allowable Radial Load (kN)	径向承载 Allowable Thrust Load (kN)
JDBS-015	15	$^{+0.018}_0$	26	$^0_{-0.013}$	12	9	22	4	8	6.5	0.5
JDBS-020	20	$^{+0.021}_0$	32	$^0_{-0.016}$	16	14	28		4	12.6	1.4
JDBS-025	25	$^{+0.021}_0$	42	$^0_{-0.016}$	21	18	36		5	21.8	2.5
JDBS-030	30	$^{+0.025}_0$	50	$^0_{-0.019}$	27	23	44		6	32.0	3.5
JDBS-035	35	$^{+0.025}_0$	55	$^0_{-0.019}$	30	26	49		5	43.7	4.8
JDBS-040	40	$^{+0.025}_0$	62	$^0_{-0.019}$	33	28	55		6	54.7	5.7
JDBS-045	45	$^{+0.030}_0$	72	$^0_{-0.022}$	36	31	62		5	69.7	7.2
JDBS-050	50	$^{+0.030}_0$	80	$^0_{-0.022}$	42	36	70		5	92.4	10
JDBS-060	60	$^{+0.030}_0$	100	$^0_{-0.022}$	53	45	90		6	143	16
JDBS-070	70	$^{+0.030}_0$	110	$^0_{-0.022}$	58	50	99		5	181	20
JDBS-080	80	$^{+0.035}_0$	130	$^0_{-0.025}$	70	60	115	6	254	30	
JDBS-090	90	$^{+0.035}_0$	140	$^0_{-0.025}$	76	65	125	6	313	36	
JDBS-100	100	$^{+0.035}_0$	160	$^0_{-0.025}$	88	75	145	6	6	544	64
JDBS-110	110	$^{+0.035}_0$	170	$^0_{-0.025}$	93	80	155		5	642	73
JDBS-120	120	$^{+0.040}_0$	190	$^0_{-0.029}$	105	90	17		6	797	94
JDBS-130	130	$^{+0.040}_0$	200	$^0_{-0.029}$	110	95	180		5	880	105
JDBS-140	140	$^{+0.040}_0$	210	$^0_{-0.029}$	90	70	180		7	668	56
JDBS-150	150	$^{+0.040}_0$	220	$^0_{-0.029}$	120	105	200		5	1135	129
JDBS-160	160	$^{+0.046}_0$	230	$^0_{-0.032}$	105	80	200		8	891	73
JDBS-180	180	$^{+0.046}_0$	260	$^0_{-0.032}$	105	80	225		6	1002	74
JDBS-200	200	$^{+0.046}_0$	290	$^0_{-0.032}$	130	100	250		7	1434	117
JDBS-220	220	$^{+0.046}_0$	320	$^0_{-0.036}$	135	100	275		8	1577	118
JDBS-240	240	$^{+0.052}_0$	340	$^0_{-0.036}$	140	100	300	9	8	1720	118
JDBS-260	260	$^{+0.052}_0$	370	$^0_{-0.036}$	150	110	325		7	2072	143
JDBS-280	280	$^{+0.052}_0$	400	$^0_{-0.040}$	155	120	350		6	2455	172
JDBS-300	300	$^{+0.052}_0$	430	$^0_{-0.040}$	165	120	375		7	2630	