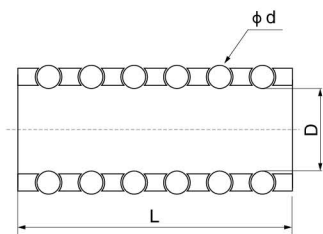


FZ 钢球保持架参数 (密珠型)

FZ Steel Ball Retainer Parameters



球径 d	轴径 D	长度 L	钢球数量	球径 d	轴径 D	长度 L	钢球数量	球径 d	轴径 D	长度 L	钢球数量
2	10	15	32	4	28	50	110	4	40	70	224
		20	48			60	130			80	252
	12	15	36			75	170			90	294
		25	64			50	121			70	256
	14	15	45			60	143			80	288
		25	72			75	187			90	336
16	18	54	80	198	60	110					
	30	90	50	132	38	70	132				
3	18	30	72	4	32	60	156	5	50	90	176
		45	117			75	204			60	120
		60	162			80	216			40	90
	19	45	117			90	252			110	240
		60	162			60	156			60	140
		90	252			75	204			90	224
	20	45	117			90	252			110	280
		60	162			60	156			70	192
		90	252			75	204			110	320
	22	50	150			90	252			80	252
		60	180			60	169			120	396
		90	270			75	221			100	360
25	50	165	90	273	160	600					
	75	253									
	60	216									
28	75	276									

注: FZ(*)为: FZH(铜基)、FZL(铝基)、FZP(树脂基)

Notes: FZ(*) : FZH (Bronze based) FZL (Aluminum based) FZP (Resin based)

FZH(铜基); FZL(铝基); FZP(树脂基)钢球保持圈, 分别以铜合金、硬铝合金、POM树脂为基体, 并在其外圆表面上, 加工出排列有序、大小适当, 形状特殊的孔穴, 在其孔穴中镶入滚动轴承钢球。孔口采用最新的沟槽周锁球工艺, 有效地解决了传统点锁球和压痕锁球不能完全防止钢球脱落的难题。孔底加工出90°止口使钢球在孔内自由转动而不脱落。由于钢球的直径大于保持圈的壁厚, 所以在使用时钢球高出保持圈内、外圆表面, 直接与相配的孔与轴接触, 使基体(保持圈)浮于中间, 并且相配的孔与轴半径之差小于钢球直径, 即钢球与之配合为过盈配合, 配合精度高, 轴与孔相对运动灵活。是保持圈的更新换代产品。

FZH, FZL and FZP ball retainer use bronze, aluminum, POM colophony as its base. They are machined some regular holes and embedded the steel-ball into. The new work-craft will prevent the ball getting out of as old. As the ball diameter is larger than the retainer's thickness, so it will face to face directly with guide bearing, this will bring high precision match. Now the ball retainer series items are designed to rotate on the post, as well as maintain its vertical motion. We believe this will give you the benefit of increasing accuracy.